

# POLYMÄTR<sup>x</sup>

THE CURE FOR COMMON PAINT



The **Technology** that Big  
Paint Companies Don't  
Want You to Know About...

...is Now in **Your** Hands

Your **last** paint job awaits.

Easily Transform ordinary paint on-site into a  
**Professional-Grade Coating**. Enjoy decades of  
performance that spares you paint jobs.

[www.encorecoatings.com](http://www.encorecoatings.com) 888-776-2242

# How Does **POLYMATR<sub>x</sub>** Work?



## PROFESSIONAL GRADE PERFORMANCE

POLYMATR<sub>x</sub> is a blend of several acrylic resins that, together, have a remarkable effect on the performance of standard acrylic/latex paint. By increasing durability, elasticity, and color-stability, POLYMATR<sub>x</sub> makes your paint up to **7X** more resilient to daily expansion and contraction cycles caused by the changing weather; the same cycle that destroys ordinary paint in 3-5 years! POLYMATR<sub>x</sub> gives you a “**just painted**” look that lasts for decades!

### **Elasticity**

POLYMATR<sub>x</sub> IS ENGINEERED TO MOVE WITH THE SURFACE THROUGHOUT THE SEASONS FOR UNMATCHED CRACK PROTECTION.

### **Improves Color Stability**

PREVENTS COLOR FADE - EVEN THE MOST DIFFICULT COLORS TO MAINTAIN OVERTIME, SUCH AS REDS AND YELLOWS, ARE PRESERVED WITHIN POLYMATR<sub>x</sub>'S UV-RESISTENT BARRIER.

### **Adhesion**

HIGH POWERED RESIN BINDERS PROVIDE AN OUTSTANDING BOND TO THE SURFACE.

### **Durability**

A MID-GRADE ACRYLIC PAINT MODIFIED WITH POLYMATR<sub>x</sub> WILL BE MORE DURABLE THAN ANY “TOP-OF-THE-LINE” EXTERIOR ACRYLIC PAINTS. PERIOD.

### **Superior “Hide” Qualities- 30-50% Increased Coverage!**

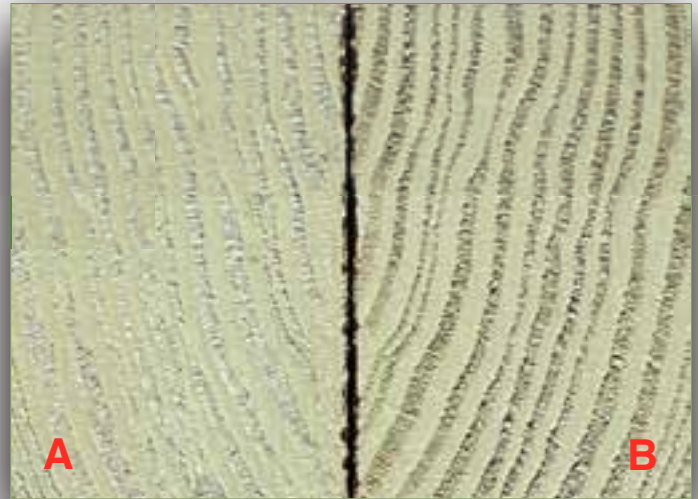
THE UNIQUE RESINS IN POLYMATR<sub>x</sub> LEAVE A THICK BARRIER THAT DRAMATICALLY INCREASES SURFACE COVERAGE AND PROTECTION.

(SEE BARRIER EFFECT ILLUSTRATION ON RIGHT).



## THE BARRIER EFFECT

1 COAT OF POLYMATR<sub>x</sub> PAINT= 2.5 COATS OF ORDINARY PAINT!



**A:** POLYMATR<sub>x</sub>-MODIFIED PAINT

**B:** ORIGINAL PAINT WITHOUT POLYMATR<sub>x</sub>

Displayed above are two pieces of raw wood, which are great examples for a demonstration like this: See how ordinary paint “soaks” into the surface, providing little-to-no barrier, therefore negatively effecting surface coverage and protection? However, the **SAME** paint with POLYMATR<sub>x</sub> not only soaks into the surface, but creates a consistent, durable barrier, even on the most porous of surfaces! It will continue to act as a shield to the harmful elements and UV rays. Which would you prefer to protect your investment?

## IT'S SIMPLE

- 1.) ADD 1 QUART OF POLYMATR<sub>x</sub> TO EACH GALLON OF EXTERIOR ACRYLIC PAINT. MIX THOROUGHLY.
- 2.) FOLLOW STANDARD PAINT PRACTICE

